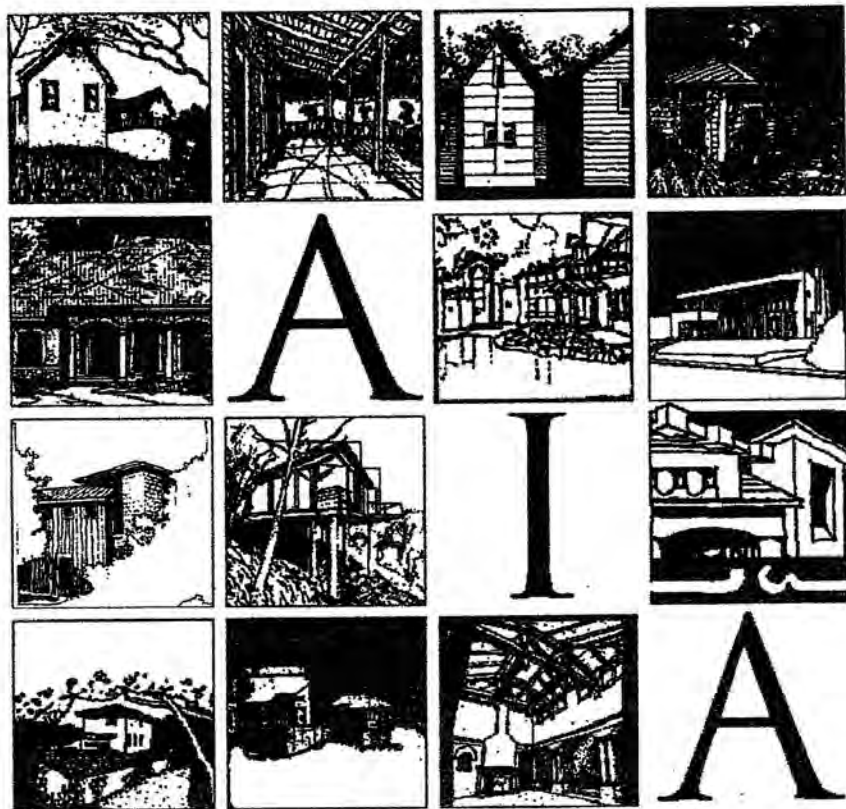




AIA AUSTIN, A CHAPTER OF THE
AMERICAN INSTITUTE OF ARCHITECTS

PRESENTS



HOMES TOUR 1996

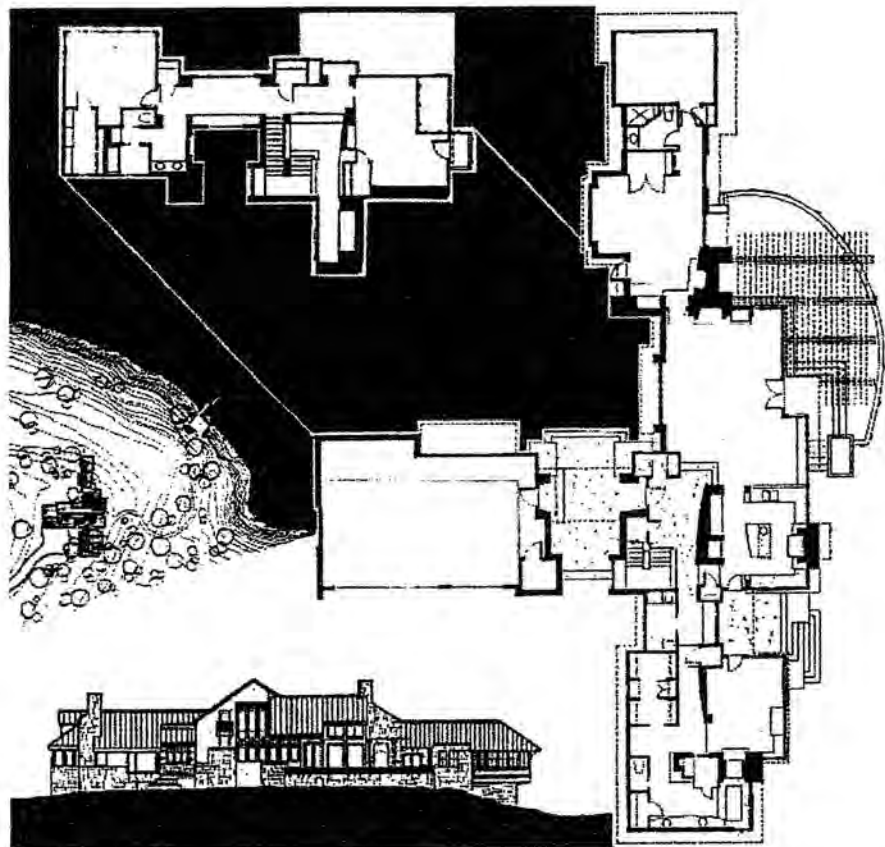
OCTOBER 5 - 6, 1996 • 12:00 - 6:00 PM

Walla Residence

Dick Clark Architecture

Perched atop a gentle bluff overlooking Lake Travis, this 4100 square foot residence recalls the sense of spirit and history associated with the Texas farmhouse. Intricately massed and traditionally detailed forms give rise to a bold, linear footprint. The open, informal arrangement of space and volumes is perfectly suited for the casual style of living the clients desire. The approach to the house sets up the bucolic nature of the design while maintaining a private elegance to address the street. Once inside however, an atmosphere of casual elegance prevails. The result is a house with two faces unified by form and materials.

Entry is facilitated by a trellised breezeway which divides the garage from the main body of the house and connects it to the children's bedroom above. The entry itself is a dramatic two story space occupied by an open staircase and a subtly curving stone wall which defines circulation and directs visitors toward an open living and dining area. Interior volumes are spacious and reveal the intricate nature of the exterior massing. Small overlooks, half walls, and double height spaces make each room part of the next, projecting an air of history and a sense that the house was built over time. Open living and dining areas give way to a sweeping stone terrace and expansive views of the lake beyond. The kitchen adjacent to these areas is connected to a sun room above by a tall composition of windows with a railed overlook. A rich array of materials serves to further manifest the additive feel of the design. Exterior materials such as limestone, stucco and shiplap siding all serve to reinforce the idea of an informal composition of forms built over time. Throughout the interior the theme is repeated. A combination of slurried and coursed limestones were used at fireplace masses, the master bedroom and entry. Stained concrete, sandstone, and long-leaf yellow pine were used on the floors. Long-leaf yellow pine was also used extensively throughout the house for trim and selected doors as a unifying element.



Walla Residence

26404 Sailpoint Drive

OWNER

Rusty and Shannon Walla

ARCHITECT

Dick Clark Architecture

Design Team

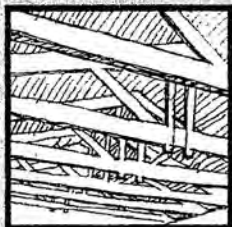
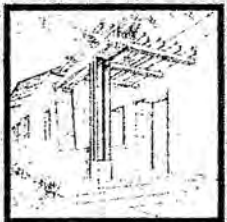
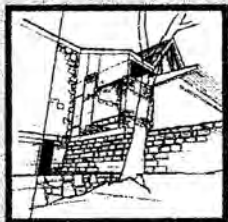
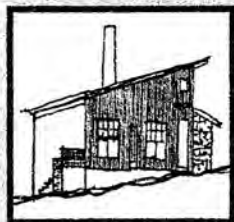
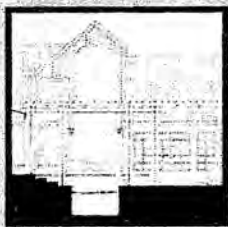
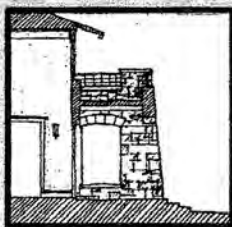
Dick Clark, Patrick Dusey,
Heidi Goebel, Jay Corder

SIZE

4100 Square Feet




AIA HOMES TOUR

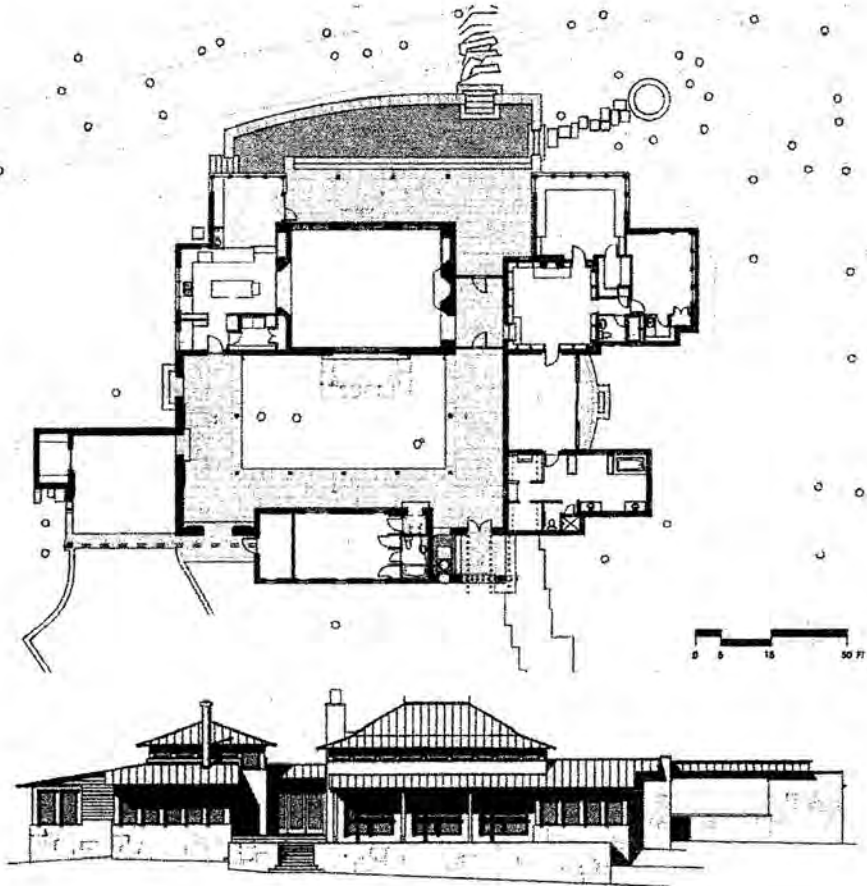


THE MILLENNIUM TOUR

October 7-8, 2000

12:00 - 6:00 pm

 **AIA Austin**
A Chapter of The American Institute of Architects



Home Square Footage: 4000 sf

Project Team: Gary Furman, AIA
Patrick Alexander

"The experience of our houses is always dependent upon (and hopefully enhanced by) the dialogue between building and landscape." Gary Furman, AIA

GARY FURMAN ARCHITECTS

Nestled deep within a wooded property on a slight ridge with an expansive view of Lake Travis, Gary Furman Architects have designed an extraordinarily serene residence for an exceptionally sophisticated client. The sublime attention to material finishes, structural details and proportions are so confident, consistent and reassuring, that one immediately appropriates a state of repose.

The formal organization of the house consists of an aggregate of carefully defined public and private realms surrounding a meditation courtyard, which provides a carefully measured counterpoint to the boundless character of the lake beyond. The courtyard also provides a peaceful connection to nature as one moves from realm to realm under the three flanking porches. It must be noted that the courtyards points of entry and egress are located at the four corners, whereas the interior spaces are typically entered on axis. This subtle difference distinguishes the overtly formal public spaces from more private areas and is a key transition device which establishes the overall hierarchy of the interior.

The entry hall to the interior realms extends off of the porch and is situated between the living room and the library. This interstitial conditioned space is defined by slender steel and glass doors, which can of course be opened to allow unimpaired movement between realms. The stature of the main living space is authoritatively announced by meticulously cut limestone walls, contrasting concrete lintels, a delicious cherry wood ceiling and sweeping views of the lake. To the south, the library is wrapped in clerestory windows of varying widths which creates a rhythmic dance of soft light suitable for a good read or just daydreaming.

The home was constructed by Schatz Builders, Inc., a firm experienced in working with AIA architects. It has been said that there can be no great architecture without great craftsmanship, because the very soul and spirit of a building lies in it's details. The way a stone is set or a piece of timber is planed, say much about the knowledge, skill, and concern of the eyes and hands that shaped them. For every building, be it great or small, is crafted by hand. Yet the true measure of great architecture extends beyond the carpenter's rule, and this house designed by Gary Furman Architects obviously measures up.

"Our intention is to find a repose between the inherent massiveness of stone and concrete and the more delicate constructions allowed by steel and wood."
Gary Furman, AIA



Note: Parking is available at lot adjacent and to the north of House no. 8. Please follow AIA Homes Tour signs.

3
5
1
2

N
O
R
T
H

R
M

6
2
0

8

Builder makes a splash with rooftop swimming pool

By Shanna Howard
Special Sections Staff

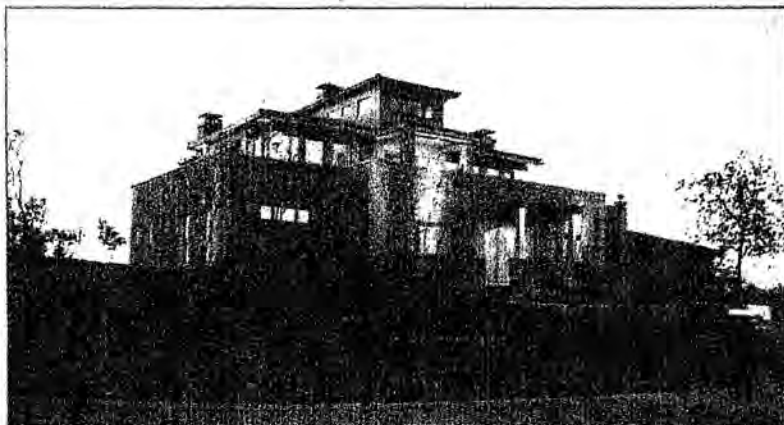
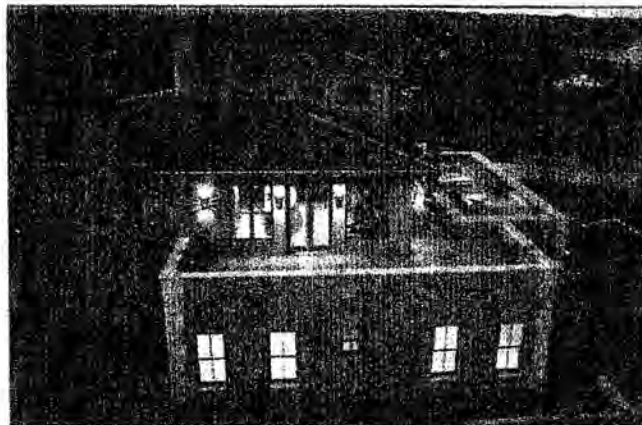
This custom Old World villa commands attention upon its hill-top vantage point. Unique touches entice the eyes, from the artistic decoration on the chimneys depicting the phases of the moon, to the two fountains streaming down the façade. But, the most curiously unusual part of this home is the second-floor pool.

Upon entering the home through a decorative gate, visitors glance up to find four feet of water above their head separated by a half-inch of Plexiglas. A glass-bottomed pool on the second story takes advantage of its elevation, offering stunning views of the Hill Country and Lake Travis, plus swimmers upstairs can greet you as you enter the home.

"You can be up there and enjoy the view," says Peggy Schatz, who handles the administration for her husband's company, Schatz Builders, Inc. "This is the most peaceful place in the world."

"We had this corner lot that had this great view on the second floor," says Rick Schatz. So, he wanted to find some way to best utilize the vistas. The builder decided on an upside-down floorplan. The pool was manufactured as one piece, and Schatz brought it in from Houston on a flatbed truck. He says the weight of the water and metal clamps ensure the pool won't leak on unsuspecting guests.

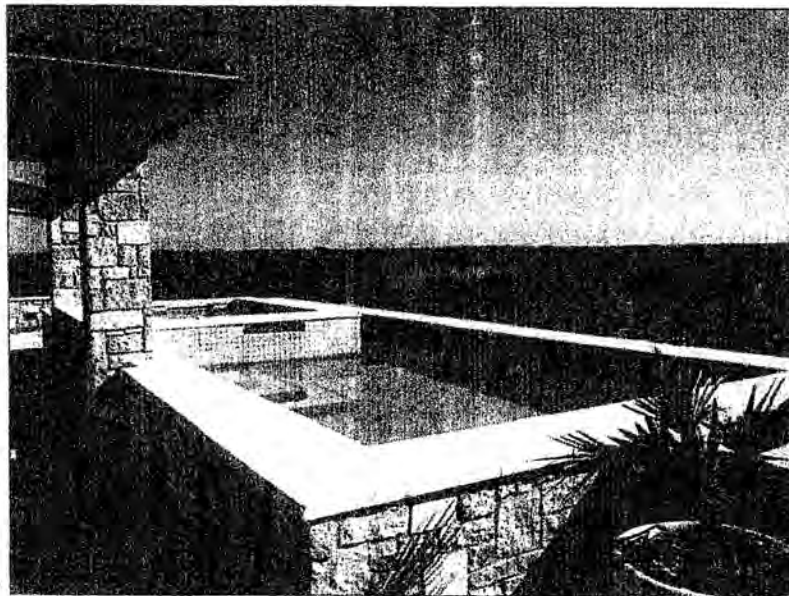
This house is the first speculative house Schatz has built, although he has been building custom homes in the Austin area for



15 years. He began building this home last April. "This has turned out to be a great challenge and a lot of joy," he says.

Schatz says he has gotten good feedback from people who have toured the house, even incorporating some of their ideas into the finished home. He says everyone, old and young alike, sees it as a "party house," a great place for entertaining, and they like the open floorplan and wide vistas.

The rooftop pool and spa features automatic heating and a swim-up bar. The pool heating and the downstairs fountains can be controlled with the flip of a switch. In addition, this 4,656 square-foot house features almost 1,400 feet of patio space. Downstairs, a covered deck extends from the family room for entertaining. Upstairs, off the living room, there's the pool and a



Photos by Bret Bond, courtesy of Schatz Builders, Inc. Exterior photographs of the home provide a view of the unique pool, top left. The front view during twilight shows the unique architecture and how it is illuminated, top right. The second-story pool offers fabulous views of the Hill Country and Lake Travis, left. A one-of-a-kind entryway features ceiling views of the glass-bottom pool, above.

Hill Country house features cool pool

Continued from G1

wraparound leuder limestone deck with views of the signature hole of the golf course, featuring a waterfall, along with panoramic views of the Hill Country and Lake Travis.

The upstairs living room features motorized shades to block the sun shining in through the room's walls of windows; upper windows create a thermal siphon by providing a vent for rising heat. The room is trimmed with a special cypress that is found throughout the house. Custom lighting by Two Hill Studios illuminates the room. Above the fireplace, the living room is wired for flat-panel television. The open floorplan joins the dining room to a bar and a gourmet galley kitchen featuring Sub-Zero and Thermador appliances, and Venetian gold granite and dark marble. Off the living room is the master bedroom, featuring Mexican walnut travertine tile in the bath.

Downstairs, reached by either a staircase or an elevator, visitors will find stone archways and arched breezeways. Off the main entry, also done in gray leuder limestone, there is a wine cellar with 12-inch-thick walls and an exercise room. Three additional bed-

rooms can be found downstairs.

The family room, located at the back of the house, features a high ceiling with cypress beams, a fireplace and a kitchenette. Additionally, there is a laundry room and a three-car garage, as well as 3½ bathrooms total.

Other hand-chosen features include solid maple doors with satin nickel finish hardware, slate, stone and stressed-hardwood floors and Marvin wood windows.

The home presides over Barton Creek Lakeside, a master planned community designed to remain a small, private and very secluded enclave with a finite number of primary and secondary homes landscaped into 800 acres of prime Texas Hill Country.

Most buyers are retirees or are owners purchasing their second homes, but professionals working in Austin call the area home, as well. With a full golf course and a clubhouse, a sense of community has been developed in Barton Creek Lakeside.

Schatz, who has built a dozen other homes in the community over the last several years says, "We have a lot of confidence that once somebody meets the neighbors, they'll love the area."